



LEAVERITE NEWS

Grand Junction Gem and Mineral Club
2328 Monument Road
Grand Junction, CO 81507








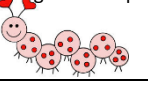

★ PRESIDENTS MESSAGE BY MEL BERSCH ★

We are well on our way into 2017. Wishing all a Happy Valentine's Day!

The board and show committee will meet at the Bersch's house 7:00 pm on Wednesday February 8, 2017. We will have several things to discuss about our upcoming 70th annual Gem, Mineral, & Jewelry show to be held at Two Rivers Convention Center Mother's Day weekend.

I want to remind everyone to make sure you pay your 2017 dues. We would like all dues paid by March 1, 2017 so we can then create an up-to-date directory for everyone to have.

Check out meetup.com and get signed up. If you have any questions, contact Jim Schultz at 970-242-0428. This is a great way to stay up-to-date on what is happening in the club.

February 2017				Volume 34 Number 2		
Sunday	Monday	Tuesday	Wednesday	Thursday	Friday	Saturday
 <p>Building Fund Match \$1000.00 Donation!</p>			<p>1 12-3 Open Shop</p>	 <p>2 6-9 Beginning Lap</p>	<p>3</p>	<p>4 9-12 Open Shop 12-3 Filigree</p>
<p>5</p>	<p>6</p>	<p>7 12-3 Chain Maille 6-9 Beg & Adv Lap</p>	<p>8 12-3 Open Shop 7:00 Board Meeting</p>	<p>9 Cookie Meeting 6:30pm</p>	<p>10</p>	<p>11 9-12 Open Shop 12-3 Filigree</p> 
 <p>12</p>	<p>13</p>	<p>14 12-3 Chain Maille 6-9 Beg & Adv Lap</p>  	<p>15 12-3 Open Shop</p>	<p>16 6-9 Beginning Lap</p>	<p>17</p>	<p>18 9-12 Open Shop Faceting 9:30 12-3 Filigree</p>
<p>19</p>	 <p>20</p>	<p>21 12-3 Chain Maille 6-9 Beg & Adv Lap</p>	<p>22 12-3 Open Shop</p>	<p>23 Dinner Meeting 6:30pm</p>	<p>24 12-3 Chain Maille Mineral Group</p>	<p>25 9-12 Open Shop</p>
<p>26</p>	<p>27</p>	<p>28 12-3 Chain Maille 6-9 Beg & Adv Lap</p>	<p>1 12-3 Open Shop</p>	<p>2</p>	<p>3 12-3 Chain Maille</p>	<p>4 9-12 Open Shop</p>

January Program

We would like to thank the guest speaker for January, Eric Eckberg, for an interesting and fun evening. He is a Grand Junction BLM’s geologist. He is also a rock hound with a background that includes about 10 years in the private sector, doing mineral exploration for gold, silver, copper, zinc, and other metals. He has worked in a number of mines in the United States and has done exploration in Chile, Mexico, Wyoming, Nevada, Colorado, and other places.

He was accompanied by his wife and three children. He gave a presentation of what BLM does in regards to Rock Hounding, and mineral location. He would love to work with the Grand Junction Gem and Mineral Club on mutual sites for improvement or education. You will find an abundance of resources at the BLM Field Office or you can call him with specific questions.

Grand Junction Field Office
 Address: 2815 H Rd, Grand Junction, CO 81506
 Phone:(970) 244-3000
<https://www.blm.gov/co/st/en/fo/gjfo.html>
 Eric’s phone number 970-244-3077



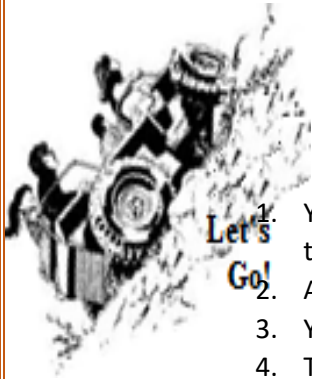
Maps, Brochures and Closures	Lands & Minerals	GJFO Recreation	NEPA
Volunteer Opportunities	News	Permits	Wild Horse Program
History & Culture	GJFO Resource Management Plan	Special Recreation Permits (SRPs)	Shooting
McInnis Canyons NCA	 Ruby-Horsethief Colorado River Camping	Fire	Dominguez-Escalante NCA

- In The Spotlight...**
- River Cleanup Scheduled
 - Fire Restrictions in Effect - None
 - BLM Seeks Input on new outfitter permits
 - Partner organization receives national recognition
 - Target Shooting Range Access Interruption
 - Christmas Tree Permits On Sale - News Release - Stipulations - Farmers Canyon - John Brown Canyon -Monument Area - Toms and 8 Road
 - Beginning October 1, fire ban ends along Ruby-Horsethief rafting campsites. Fires restricted to firepans beginning October 1.
 - Tabeguache Connector Trail Approved (9/9/15)**
 - Press Release
 - Environmental Assessment
 - Approved Grand Junction Resource Management Plan - Record of Decision
 - IMPORTANT NOTICE REGARDING TULAREMIA INFECTION
 - Dangerous Colorado River Hazards - Video
 - Grand Junction Regional Airport Proposed Land Transfer (conveyance)
 - Press Release (5/19/15)
 - Preliminary Environmental Assessment



Click map for enlarged image.





Field Trips

Field Trip Rules for 2017

There are 23 trips in the planning stages!

Let's have fun this next year!!!

1. You MUST sign up for field trips on Meetup.com or notify the field trip leader to place you on the list. If you do not have a computer, use your cell phone.
2. Attendees MUST be members of GJGMC or first time guests of members.
3. You Must have a release of liability on file.
4. There will be a limit of 15 attendees on each field trip.
5. If your plans change, notify the field trip leader so someone can take your place.
6. If the field trip has any changes or is cancelled, you will be notified.

Facetors' Meeting

January , 28, 2017

Due to weather, the January meeting was postponed for a week, regular meetings will resume on the third Saturday of the month. Our next meeting being on February 18th.

Members attending: Howard Whipple, Mike Ryan, Ralph Stuart and Connie Duncan.

Our project, "Flower of the Mines" was cut by Howard - Citrine and Lavender CZ, Connie - Peach-colored CZ. Howard also had a stone cut in green CZ named "Blinder". This design has 165 facets and really produces a beautiful stone, wonderful scintillation. Connie brought her Dec. project, which was a recut and polish on clear corundum. The original was very poorly polished due to eye problems which required the stone be recut and polished. Doc brought a Smoky Quartz in the "Portugese" design. this stone has 167 facets and is also a real beauty. This design is very old and cuts a very deep stone.

Howard brought his ceramic lap and discussed how he charges the lap, and how he uses it for cutting in most the facets on a smaller stone. He has excellent luck with the ceramic on most materials and uses diamond paste as opposed to the diamond spray. The group discussed the merits of using paste over spray, and decided diamond paste might be the better choice on ceramic.

Connie told the group that one of our members had donated money to the group as a "Thank You" and it is to be used for the benefit of the entire group. After some discussion, it was decided that Connie would decide how to use the monies to benefit the group.

Our next meeting is Saturday, Feb. 18th and our project is "Easy Does It", a trillion design.

Classes

Sign up sheets are found on the front table during meetings. Please sign up for classes you are interested in taking. The teachers will contact you as to when the class will begin, dates and times it will meet and materials necessary for the class.



Brag Rocks



Mineral Group

January 27, 2017

We had a nice group of people to enjoy the evening. Mel gave a talk on minerals he had purchased over the holidays from old European collectors. All were micro and several were rare uranium minerals from mines that are now closed. A short history of each piece was included. We also looked at a number of different specimens that people had brought.

The next meeting will be at the Bersch's house at 6:30pm on February 24, 2017. All club members and their guests are welcome. Bring 5 specimens to look at and to discuss from your collection or specimens you need identified. We will try to help. Our next meeting theme is MEXICAN AGATES. We will discuss how they form, where they come from, and what a good agate for your collection is.

Mel Bersch

Here are some pictures from our January meeting.



Zeunerite



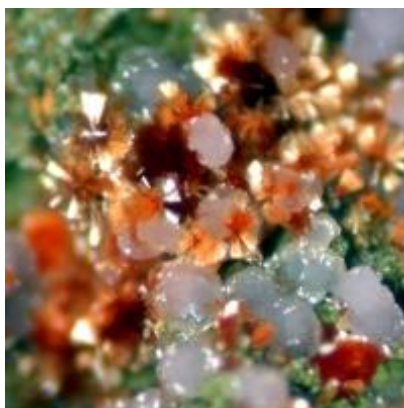
Karibibite



Metatyuyamnite



Wulfenite



Beraunite & Stringite



Boleite

GRAND JUNCTION NEWS

Richard Fischer, president of the *Grand Junction Mineralogical Society*, of Grand Junction, Colorado, has arranged a series of educational lectures, to take the place, in part, of field trips. The February 3 meeting was devoted to a study of magnesium, with Lowell Heiney, of Mesa College faculty, appearing as the principal speaker.

The February 15 meeting was devoted to a study in botany as a foundation for the study of paleobotany. The speaker of the evening was Jack Herr, one of the best authorities on botany in the West. A large collection of fossil woods accompanied the program.

A COLORADO FIELD TRIP

RICHARD H. A. FISCHER
Grand Junction, Colorado

THE annual field trip of May 30 and 31, sponsored by the *Grand Junction Mineralogical Society*, proved to be the most successful yet held. Numerous guests joined the caravan including, Stevens T. Nervill of the *Marquette Geological Society* of Chicago; Drs. Quinn and Gilpin, of the Field Museum; Chester Howard, of the *Colorado Mineral Society*; Dr. Oliva McHugh, of the *Utah Mineralogical So-*

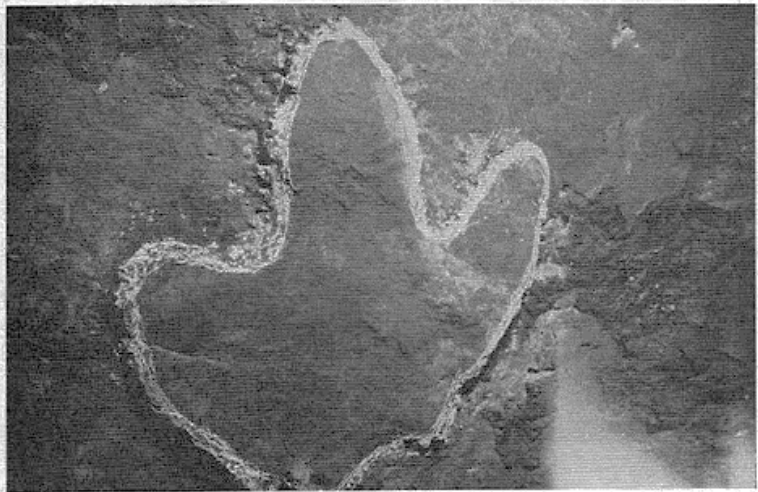
dinosaur tracks, which are shown here.

Huge Geode

The party was then guided to the enormous crystal-lined geode which was recently discovered by the writer and Warren Bush. This calcite crystal-lined geode is in position, and measures some six feet in diameter, fully large enough for an adult to enter. This specimen rates as one of the finest geodes ever found in Colorado. To protect



In 1906, a massive magnitude 7.9 earthquake ruptured the entire San Andreas Fault in Northern California. That is a huge running crack in the ground. Now they are building houses right on the line as fast as the boards can be delivered.



Close up view of the huge dinosaur track on the ceiling of the Thomas Coal Mine. The track measures 34 inches in diameter, and has been outlined in white to give better contrast against the black background of coal.

ciety; and a number of members of various earth science organizations of Los Angeles.

Coal Mine Visited

The first place of call was the Thomas Coal Mine to view the huge dinosaur tracks. The party was guided through the mine under the supervision of the foreman. Edward Holt, local geologist, explained the geology of the mine and the surrounding region. Wilbur Glass took flash photos of the party underground and of the

this specimen from vandalism, the exact location can not be given.

The evening of May 30 was spent at the home of Mr. and Mrs. Richard Fischer, where lunch was served and the party viewed various collections. The party was entertained by C. E. Bond and Sam Bond, with a skit depicting early day mining camps in Colorado. A burro was used as one of the stage props. The specimen covered fireplace in the Fischer home also proved interesting.



Here we have a tired old prospector during the Klondike Gold Rush.

Grand Junction Gem and Mineral Club

Officers

President	Mel Bersch	242-3134
Vice President	Mike Burritt	260-3897
Co-Secretary	Anita Martinez	434-9270
Co-Secretary	Chris Henderson	719-244-3192
Treasurer	Pam Bersch	242-3134

Directors

Pat Martinez	434-9270
Cindy Teare	462-6806
Teri Drost	256-0983
Jim Schultz	242-0428
Betty Jo (BJ Brown)	241-3051

Committee Chairpersons

Audit	Kathy Erickson	623-2522
Building and Ground	Sylvester Spaeth	846-5716
	Judy Nason	250-9128
Compliance	Jim Schultz	242-0428
Correspondence	Bambi Harmon	216-4540
Decorating	Linda Dunham	623-3610
Display Cases	Val Meduros	773-4244
	Carmen Bruno	773-4247
Education	Cindy Teare	462-6806
Field Trips	Wayne Sims	314-2970
Funding/Constr.	Mike Cosby	589-0687
Historian		
Hospitality	Judy Nason	250-9128
Inventory		

Leaverite Editor
Librarian
Meet-Up
Membership/Badges
Nominating
Publicity
Scholarships
Shop Foreman
Show
Show Assistant
Supplies
Vests
Website

Lorrie Wallace	250-1122
JoAnn Whalen	424-2007
Evita Schultz	242-0428
Jim Schultz	242-0428
Dave McCollough	523-5443
Missy Palmer	639-2615
Teri Drost	260-2478
Wayne McMacken	208-2534
Bill Hood	241-8020
Thom Ericson	623-2522
Scott Pugsley	972-953-7735
Wayne McMacken	208-2534
Bambi Harmon	216-4540
Linda Sims	314-2970
Linda Sims	314-2970
John Mayerik	243-8589

Duties of General Membership

- Pot Luck: Bring a dish to share with several members
- Cookie Meeting: Bring 3 dozen cookies for meeting
- Cleaning: Clean before each Pot Luck Meeting
- Hospitality: Be early, greet and give out prize tickets.
- Show: Set up, take down and work during.

Sign Up for A Duty



Safety-All members
at all times.

Board Meeting

The board will meet at Mel Bersch's house, 248 Little Park Road, at 7:00 pm on the Wednesday before the 2nd Thursday Cookie Meeting each month. All club members are welcome to attend. Hope to see you there.

Club Information

The Grand Junction Gem & Mineral Club, Inc. is affiliated with the American Federation of Mineralogical Societies, and the Rocky Mountain Federation of Mineralogical Societies. The club is located at 2328 Monument Road Grand Junction, CO. The Club is a nonprofit, 501(c)(3) tax-exempt, educational organization. Our purpose shall be exclusively educational and social: To increase and disseminate knowledge of the earth sciences pertaining to minerals, gems, rocks, artifacts, fossils and similar subjects; To promote and perpetuate knowledge of the lapidary arts; To encourage field trips; To encourage greater public interest and education in gems, fossils and minerals, cooperating with established institutions in such matters. The Grand Junction Gem and Mineral Club meets on the second and fourth Thursday of each month at 6:30 pm in our club building. June, July, and August meetings will be on the fourth Thursday only. November and December meetings will be on the second Thursday only. Our Annual Show is Mother's Day Weekend and is held at Two Rivers Convention Center at 159 Main St, Grand Junction, CO 81501. Classes and workshops are offered throughout the year and are announced in the newsletter.

The Mineral Group

The Mineral Group meets at the Bersch's, 248 Little Park Rd, on the Friday after the 4th Thursday's Club Meeting and is open to all club members and guests. A potluck will be followed by discussion and microscopic images of various minerals. Please bring up to 5 specimens, and/or other minerals you wish to look at for the discussion.

New Members

Welcome to the Grand Junction Gem and Mineral Club. Include your email address when you register to receive newsletters and updates. Check out the website for past newsletters and general information. Order a vest made to your size from Connie Lynch for \$20.00 and a name Tag from Dave McCullough for \$8.00. Be sure to sign up for some classes to learn how to use the machines in our shop so you can participate in open shop.

Dues

Our calendar year is January 1 - December 31. Dues are due by December 31 but must be in by January 30 for names to be included in the Club Directory. Please pay your dues at the meeting or send to: Dave McCollough 3032 Milburn Court Grand Junction, CO 81504; 970-523-5443. Prospective members should attend one general meeting to obtain a membership application. Annual dues will be prorated after July 1st. Adult Member - \$30.00 (18 and over 2nd Adult, same household - \$10.00 Children under 18 years, same household - No Cost

Club Rules and Regulations

The notebook of rules and regulations is available on the front table at all meetings for members to read.

Gem and Mineral Classes

Most classes are 6 weeks. Member's cost \$30.00. Non-member's cost is \$60.00. The cost of the classes is based on 6 weeks and prorated when the class is shorter. Please contact instructors to sign up for classes.

Class	Instructor	Phone	Open Shop
Beading	Tiny Blasdal	858-7975	Shop Chairman: Thom Erickson 623-2522
Chain Making	Cindy Teare	462-6806	Shop Supervisors:
Faceting	Connie Duncan	244-2984	Wednesday: 12-3 Thom Erickson 623-2522
Filigree	Jana Burritt	260-9471	Saturday: 9-12 Scott Pugsley 972-953-7735
Intarsia	Jim Lynch	361-2123	Previous instruction in use of equipment is required
Lapidary	Jim Schultz	242-0428	before using any tools or machines in the shop.
Lapidary	Mike Burritt	260-3897	Sign in each time you use the shop.
Silversmith	JoAnn Piburn	245-1669	Help with the clean-up before leaving.
Silversmith	Wayne McMacken	208-2534	Shop fee is \$5.00/session.
Wire Weaving	JoAnn Piburn	245-1669	Slab saw \$.26 per square inch.
Wire Wrap			Always—Safety First

The Leaverite News

The Leaverite News is your newsletter. Articles, ideas and news should come from the club members. If you are an officer, director, or committee chair person you should plan to submit monthly updates by the 15th of each month. News should be emailed to leaveriteneews@gmail.com or contact Lorrie Wallace (250-1122 or JoAnn Whalen (424-2007, 554 Casa Rio Ct., Grand Junction, CO, 81507. *Leaverite News is published nine months of the year (Sept-May by the Grand Junction Gem and Mineral Club, Inc. Articles printed in this newsletter are the experiences and/or opinions of the individuals submitting them. They do not necessarily reflect the views or opinions of the Grand Junction Gem and Mineral Club, nor of the editors. Articles written without a byline are written by the editor. We are not responsible for authenticity, safety, or reliability of publications. All articles/photos are included in accordance to fair use for research and education. Caution and safety should always be practiced when trying out any new idea, venture or exploration in the field. We request corrections and/or additions to articles.*

Grand Junction Gem and Mineral Website

Our website, www.grandjunctionrockclub.org, has meeting information, Leaverite Newsletter, Classes, Field Trips, & Photo Gallery. Send information to John Mayerik; 243-8589; email Grandjunctionrockclub@gmail.com

Meetup

Meetups are neighbors getting together to learn something, do something, share something. The Club is registered at the Grand Junction Meetup. Go to http://www.meetup.com/cities/us/co/grand_junction/ to register or for information or call Jim Schultz at 242-0428.

Summary of Minutes of the Gem and Mineral Club Board Meetings

Board Meeting January 11, 2017

Old Business:

1. Front door fixed and hook on gate was repaired
2. Shed was moved to the property and setup

New Business:

Show:

- a) Attendees of show can pay on Saturday and return on Sunday for \$1. Do we want to print on tickets "return admission on Sun is \$1"?
- b) Should we discount senior/veteran show admission?

Field Trip Master List:

- a) A field trip master list has been prepared which identifies all members/non-members who have filled out a liability form to aid field trip leaders.
- b) Liability form will be revised to include a box identifying members and nonmembers.

Scholarships:

Scholarships were cut to one \$1000 scholarship, but Bill Hood requested that multiple \$500 scholarships be maintained. After discussion, Board agreed to 2 scholarships, one from donated \$ and one from the annual show silent auction. If no money is donated for scholarship(s) than only one \$500 scholarship will be given.

Fund Raising: Funds requested from Colorado Lottery is a possibility but we need someone who is familiar with grant writing. Pat and Anita will match funds, not to exceed \$1000, donated by the membership for the building fund. Pat will announce this to membership tomorrow. Mike Burrit will contact businesses to advertise in club newsletter to offset cost of mailing newsletter.

Display Dinosaur Bones:

A big dinosaur bone bought from Chicken Jones by Nancy McGuire is on loan to club. A large dinosaur femur bone will be donated to the club by Pat Briels in memory of her late husband Gary.

Budget: Jim Schultz noted budget difficulty when the show is on a different account. May want to have an advertising committee for the show.

Gold Club: VFW wants gold club to contract with them for their meeting space but the Gold Club doesn't want to do this so they no longer have a meeting site. They wanted to know if they have to be members to use our facility. It was GJGMC's understanding that they would be club members and they could be a subsection of the GJGMC just like the mineral group and the faceting group.

General Meeting January 12, 2017

Old business:

Classes: Wayne McMacken wants to start a Silver Smithing class possibly Tuesday mornings 9 AM to noon. He would like input if this timeslot will work.

Building and maintenance: Our new storage shed has been moved in and set up along the West side of the shop building. The storage shed will be for general storage and members can store their yard sale donations but they need to call Mel to arrange a time to get into the storage shed.

Field Trips: We currently have 23 trips for 2017 planned out. Please see Wayne Simms or Jim Schultz for more details.

New Business:

Building Fund: A club member wishes to donate \$1000 to the building fund provided club members match with \$1000. The current priority is survey work of the property boundaries. It was asked to install in the clubhouse a graphic of some sort showing matching funds on the graphic. Also at least \$50 for matching funds was donated during the club meeting to the building project.

We as a club have accomplished a lot last year. Because of that we have only the new building left to do. With everyone's help this too will come about. I wish to thank all those that contributed to our successful year of 2016.

Show Meetings: Wayne McMacken will have a committee meeting January 17 at 7 PM.

January 26, 2017

Fund Raising: Lions club did not accept our request for funds. Building Fund has a \$1000 matching fund challenge. Members have raised \$135 so far, which will be matched by funds from the challenge. This fund challenge will end July 1st.

Membership: Dues for 2017 must be paid in January. Members who have not paid 2017 dues by March 1st will be removed from the membership list, at which point, they are no longer eligible to go on field trips or use the shop.

Classes: Wire Weaving - JoAnn Piburn; class coming soon.

Chain Gang - JoAnn Piburn; Members can meet on

Wednesday evenings between classes to work on chains.

Show Committee: chaired by Wayne McMacken Executive Board is helping the Show committee. A puppeteer, who dresses in various dinosaur costumes, will attend our upcoming show at a cost of \$1200. All dealer booths are full, Grab bag workday will be April 8th (Sat) @ 10:00 am, Thom Ericson will identify a work day to organize silent auction items. Show committee will attend the next Board meeting on February 8th at Mel Bersch's house.

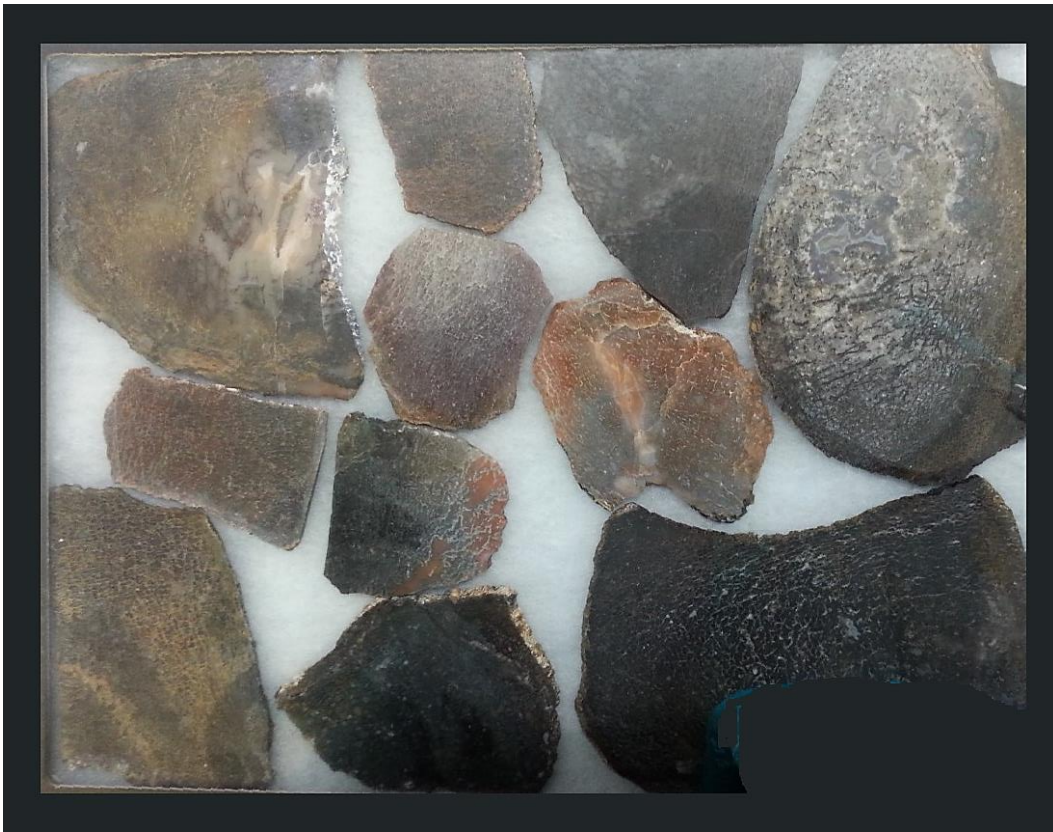
New Business:

Alyssa Duerst, with the help of Gloria Duerst, gave a slide show presentation on how to polish a rock. Val Meduros and Carmen Bruno provided instruction and equipment.

Brag Rocks ...continued







Rare Earth Metals and the Left Behind Necktie

A scientific team has been analyzing particles removed from the clip-on tie left behind by Cooper after he hijacked a Northwest Orient passenger jet in November 1971. On Thanksgiving Eve 1971, a man aboard a Portland to Seattle flight told the flight attendant he had a bomb in his suitcase. He demanded \$200,000 and four parachutes, which the FBI delivered when the plane landed at Sea-Tac Airport in Seattle.

When the plane was airborne again, headed south, the man who became known as D.B. Cooper jumped from the back staircase of the Boeing 727 with a parachute on his back into the frigid night sky and vanished.

New technology has provided additional clues for this case. A powerful electron microscope found more than 100,000 particles on old the J C Penny tie, including cerium, strontium sulfide and pure titanium.



© FBI/Handout/Reuters Artist sketches released by the FBI of a man calling himself D.B. Cooper, who vanished in 1971 with \$200,000 in stolen cash after hijacking a commercial airliner over Oregon, U.S.

These are what they call rare earth elements. They're used in very narrow fields, for very specific things," said Tom Kaye, lead researcher for the group that calls itself Citizen Sleuths. Kaye said the elements were rarely used in 1971, during the time of Cooper's daring leap with a parachute from the passenger jet.

One place they were being used was for Boeing's high-tech supersonic transport plane, which was being developed with government funding in the 1960s and 1970s. Kaye wonders if Cooper could have been a Boeing employee or a contractor who wore the tie to work. "The tie went with him into these manufacturing environments, for sure, so he was not one of the people running these manufacturing machines. He was either an engineer or a manager in one of the plants," Kaye said.

Kaye says Boeing was developing cutting edge monitors, like radar screens, that used some of the elements found on the tie. Kaye says the public's help is needed, particularly from old-timers with experience in the aerospace industry in the Pacific Northwest. The scientists would like to hear theories from the public on what those materials could have been used for. They hope the information can help build a profile of Cooper. "Someone may be able to look at those particles and say 'Oh my gosh. I know what that means having those particles on the tie,'" Kaye said.

Tipsters can reach the group through the "contact" tab on the Citizen Sleuth website: <http://www.citizensleuths.com/>

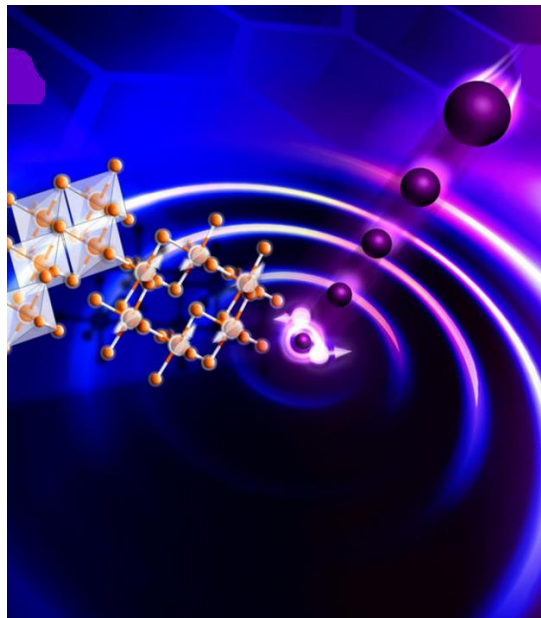
Dancing Electrons in a New Form of Matter

Credit: Genevieve Martin, Oak Ridge National Laboratory

<https://phys.org/news/2016-04-state-two-dimensional-material.html>

It's not every year physicists discover a new form of matter, but 2016 was one of those years. To be specific, the researchers actually created the new form of matter by bombarding sheets of alpha ruthenium chloride with neutrons. This created something called a Kitaev quantum spin liquid, which looks solid — you could hold a chunk of it in your hand — but contains electrons that dance about as if they were in a liquid.

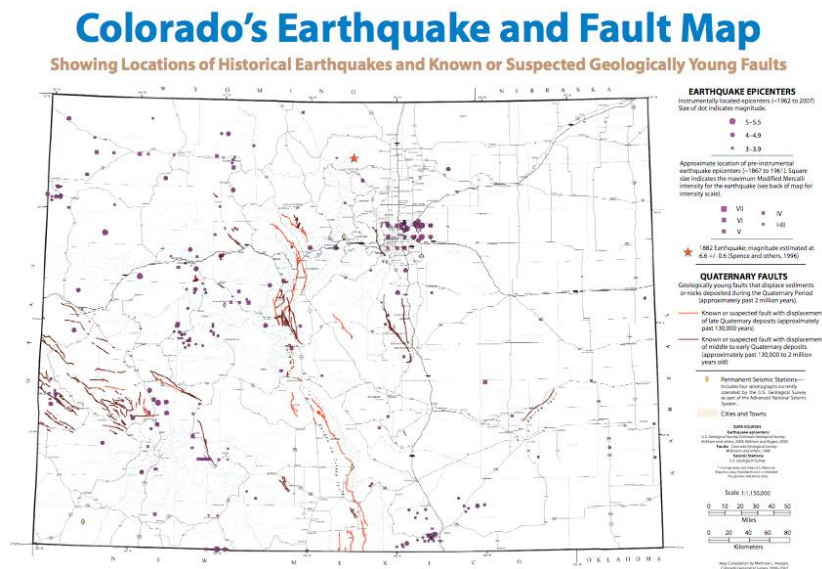
Physicists had theorized about quantum spin liquids for decades. One of those theorists, Alexei Kitaev of the California Institute of Technology, predicted a form of matter in which the electrons would interact as if they were Majorana fermions, a type of particle that acts as its own antiparticle (a particle of the same mass but an opposite charge). Scientists at Oak Ridge National Laboratory in Tennessee decided to test this theory and found that their neutron-bombarded alpha ruthenium chloride did in fact behave in this way.



In the new form of matter, the orientation (or spin) of the electrons affects the orientation of other electrons, but these electrons still remain chaotic no matter how cold the material becomes, the researchers reported. The electrons don't actually fragment into particles and antiparticles as in Majorana fermions, but their spin interactions make it look as if they do, so researchers call them "quasiparticles." The material might be useful for increasing the reliability of quantum computing.

Recent Colorado Earthquake Activity as of January 31, 2017

<http://earthquaketrack.com/r/colorado/recent>



- a day ago: 3.3 magnitude, 5 km depth Silt
- 8 days ago: 2.4 magnitude, 1 km depth Snowmass Village
- 8 days ago: 1.6 magnitude, 1 km depth Snowmass Village
- 8 days ago: 1.7 magnitude, 1 km depth Snowmass Village
- 8 days ago: 2.5 magnitude, 1 km depth Snowmass Village
- 12 days ago: 1.7 magnitude, 5 km depth Snowmass Village
- 12 days ago: 1.9 magnitude, 2 km depth Snowmass Village
- 12 days ago: 1.7 magnitude, 5 km depth Snowmass Village
- 12 days ago: 1.6 magnitude, 5 km depth Carbondale
- 12 days ago: 2.3 magnitude, 5 km depth Snowmass Village
- 12 days ago: 2.8 magnitude, 5 km depth Snowmass Village
- 12 days ago: 2.8 magnitude, 4 km depth Carbondale
- 12 days ago: 1.5 magnitude, 1 km depth Carbondale
- 21 days ago: 2.3 magnitude, 2 km depth Snowmass Village
- a month ago: 2.9 magnitude, 2 km depth New Castle

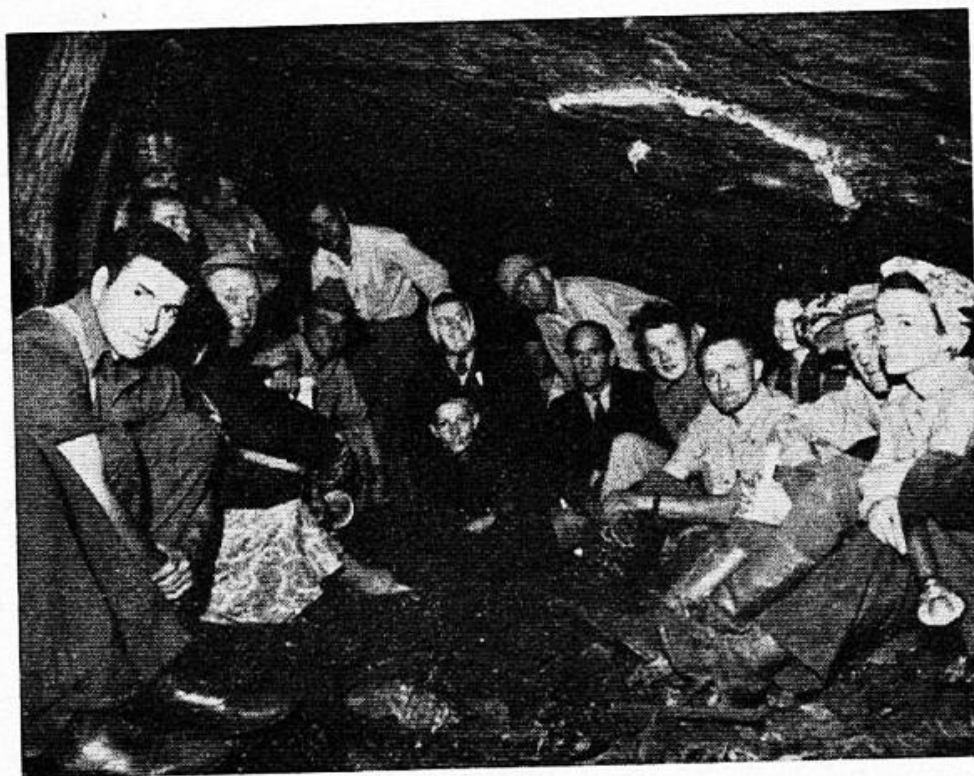
- 3 months ago: 2.6 magnitude, 2 km depth Olathe
- 3 months ago: 2.2 magnitude, 7 km depth Greeley
- 3 months ago: 3.1 magnitude, 6 km depth Greeley
- 3 months ago: 2.7 magnitude, 6 km depth Kersey
- 3 months ago: 1.6 magnitude, 3 km depth Greeley
- 3 months ago: 1.7 magnitude, 7 km depth Greeley
- 3 months ago: 2.1 magnitude, 2 km depth New Castle
- 4 months ago: 2.4 magnitude, 5 km depth Evergreen
- 5 months ago: 2.0 magnitude, 5 km depth Eaton
- 5 months ago: 2.5 magnitude, 3 km depth Greeley
- 5 months ago: 1.5 magnitude, 5 km depth Eaton
- 5 months ago: 2.9 magnitude, 2 km depth Pueblo
- 5 months ago: 2.6 magnitude, 5 km depth Greeley
- 6 months ago: 3.5 magnitude, 1 km depth Paonia

Ladder Canyon

On Sunday the caravan visited Ladder Canyon, under the leadership of A. L. Bush. This locality is noted for its fine specimens of muscovite, tour-

maline, feldspar, and rose quartz. Harold Tillinghast acted as guide to various places in the canyon. Break-

fast was served by Mrs. Glass and Mrs. Tillinghast of the *Grand Junction Mineralogical Society*. After leaving Ladder Canyon, the party was led over Monument Drive to visit the fossil beds, where among



Part of Grand Junction Mineralogical Society field party gathered underground in the Thomas Coal mine. Note the giant dinosaur footprint outlined on the roof of the mine working, at the upper right.

maline, feldspar, and rose quartz. Harold Tillinghast acted as guide to various places in the canyon. Break-

other items, some excellent ripple marks in sandstone are exposed. Some nearby gem localities were also visited.

The MINERALOGIST



APRIL, 1942

SINGLE COPY, 20c



MRS. RICHARD FISHER CONSERVES RUBBER
(See Page 124)

A NATIONAL SEMI-TECHNICAL MAGAZINE
DEVOTED TO MINERALOGY, GEOLOGY, GEMMOLOGY
AND THE COLLECTOR

THE FRONT COVER

Mrs. Richard Fisher, secretary of the *Grand Junction Mineralogical Society* of Grand Junction, Colorado, and burro "Blackjack" who has travelled extensively with her. "Blackjack" has proven invaluable in carrying supplies and bringing back specimens from regions not accessible by auto.

The secretary's first real interest in mineralogy and geology started when she attended the University of Montana, where she graduated. Mrs. Fisher has been a world traveller, specimens in the Fisher cabinet include material gathered from many parts of the world.

1 Year Photograph of the Sun's Rotation



Fantastic things in the world